

# Triple E Unitrack

If you space the hook clamps using 1 metre spacing the loading values are:

200 Kg

Point load

400 Kg UDL (Uniformly Distributed Load)

## CENTRE OVERLAP TRACK

2	TRA07	Master Runners	
1	TRA09	Head Pulley	
1	TRA10	Return Pulley	
1	TRA11	Foot Stirrup	
2	TRA26	Overlap Clip Set	must also be used as suspension points
4	TRA24	Endstop	
W	TRA06	Runners	allow 1 for every 300mm (1ft) of tab width
X	TRA17	Offset Clamp	1 every metre of track
Y	TRA14N	Hook Clamps	X + 2
Z	TRA25	Line Pickup	Use 1 every 2.5 metres (8ft) of track (if required)

Straight sections are required allowing for:

Size of opening

Overlap

The need to stow a Master Runner (150mm) + W/2 runners (40mm each) on both sides of the stage.  
You may also have to make allowance the the 'fullness' of the tabs.

## WIPE TRACK

1	TRA07	Master Runner	
1	TRA09	Head Pulley	
1	TRA10	Return Pulley	
1	TRA11	Foot Stirrup	
2	TRA24	Endstop	
W	TRA06	Runners	allow 1 for every 300mm (1ft) of wipe width
Y	TRA14N	Hook Clamps	1 every metre of track
Z	TRA25	Line Pickup	Use 1 every 2.5 metres (8ft) of track

Straight sections are required allowing for:

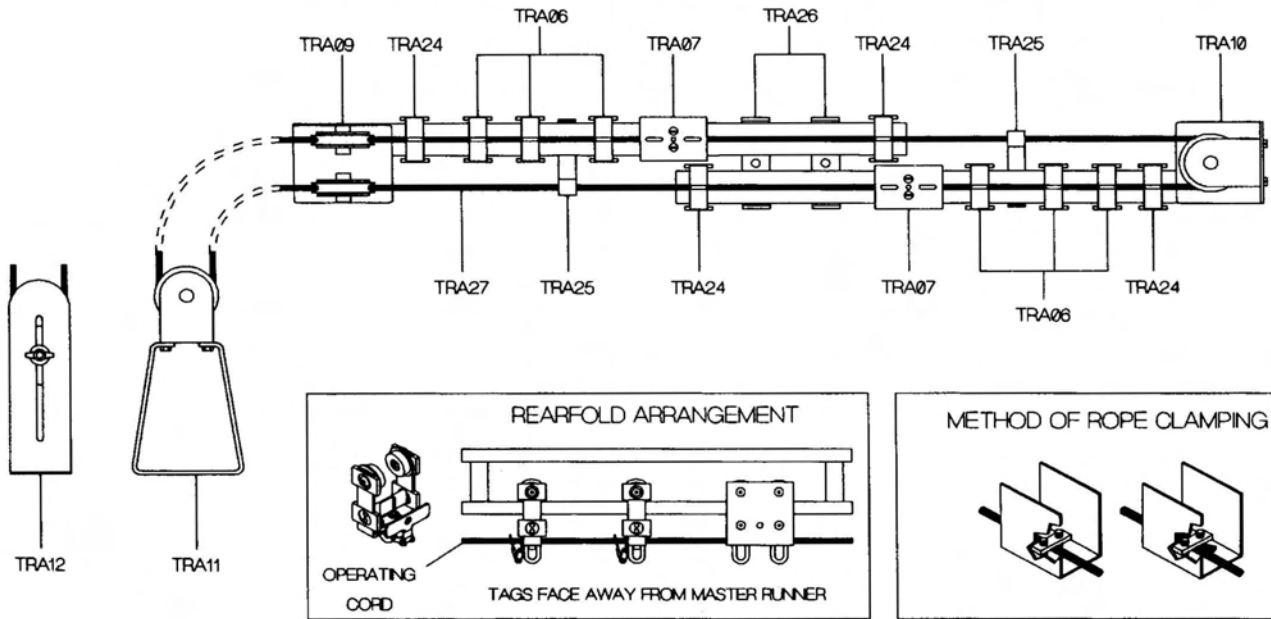
Size of opening

The need to stow a Master Runner (150mm) + W runners (40mm each) on 1 side of the opening  
You may also have to make allowance the the 'fullness' of the tabs.

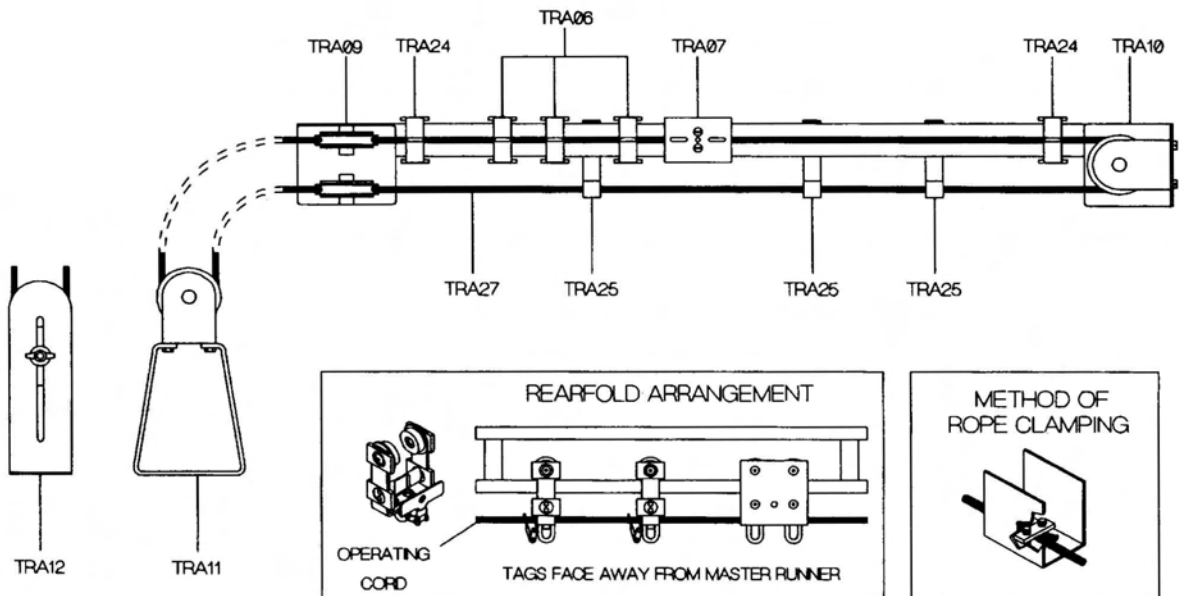
To rope the track you will need 2 x [total length of track + drop]

Sash cord is supplied as up to 4 hanks (12.5mtr each) joined as a single length. If you need more than 50mtr then you will need to purchase a drum. Please discuss rope options with our sales Team.

# USEFUL LAYOUT DIAGRAMS



## STANDARD CENTRE OVERLAP TRACK (viewed from underside)



## WIPE TRACK (viewed from underside)



**Unit C6, Hastingwood Trading Estate  
35, Harbet Road, London, N18 3HU**

Phone 020 8803 7400 email office@gradav.co.uk  
FAX 020 8803 5060 Web www.gradav.co.uk